



Panasonic

POWER YOUR DAY



Table of Contents

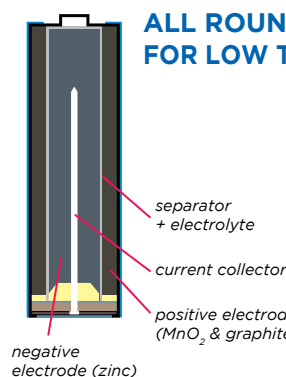
Technical expertise	4
Alkaline batteries	EVOLTA8
	Pro Power10
	Everyday Power12
	Alkaline Power14
Zinc Carbon batteries	Red Zinc16
Rechargeable batteries (Ni-MH)	Why Rechargeable Batteries?18
	Ready to Use 2450 - 900 mAh20
	Ready to Use 1900 - 750 mAh22
	Ready to Use 1000 mAh & Telephone Batteries24
	Battery Chargers26
Specialty batteries	Coin Lithium28
	Cylindrical Lithium30
	Micro Alkaline32
	Silver Oxide34
	Zinc Air - Hearing Aid Batteries36
Displays	Multiple Locations in Store38
	Coin Counter Displays39
	Carton Promotional Displays40
	Metal Permanent Displays44
Useful information	Technical Battery Specifications49
	Cross Reference Table52
	Battery Usage Tips & Tricks54
	Online Communication56

Technical Expertise

NON-RECHARGEABLES (PRIMARY)

ALKALINE (p. 20-27) 1.5V/4.5V/9V

ALL ROUND BATTERY FOR LOW TO HIGH DRAIN APPLIANCES



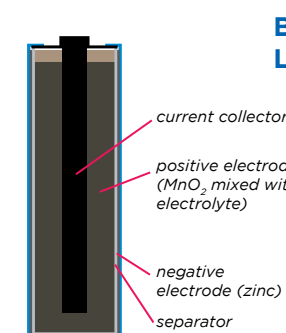
- Technology developed in 1957
- Negative electrode = zinc gel + additives
- Positive electrode = high density MnO₂
- Electrolyte inside the separator for smoother reaction
- Advanced structure with more components vs. zinc

4 Panasonic grades, specific for every type of appliances

4 ALKALINE RANGES	EVOLTA	High premium grade, especially designed to ensure optimal performance for highest drain appliances.
	Pro Power	Premium grade, developed to provide reliable and dependable power for all middle to high drain appliances.
	Everyday Power	Performs well in devices with low and continuous energy consumptions.
	Alkaline Power	Provides energy for your basic needs.

ZINC CARBON (p. 28-29) 1.5V/4.5V/9V

BEST USED IN LOW DRAIN APPLIANCES

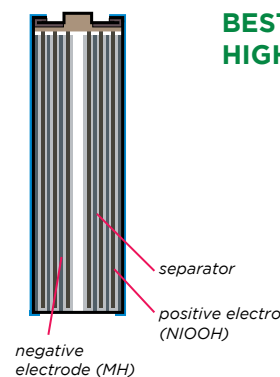


- Technology developed in 1876
- Negative electrode = zinc can
- Positive electrode = MnO₂
- Electrolyte inside the positive electrode
- Basic structure

RECHARGEABLES (SECONDARY)

Ni-MH (p. 30-39) 1.2V

BEST SOLUTION FOR HIGH DRAIN APPLIANCES



- Technology developed in 1989
- Coiled positive electrode, separator and negative electrode results in less internal resistance

4 Panasonic grades, specific for every type of appliances

4 RECHARGEABLE RANGES	Ready to Use min. 2450mAh (AA) min. 900mAh (AAA)	Optimal for heavy users who need batteries frequently for high drain consuming devices.
	Ready to Use min. 1900mAh (AA) min. 750mAh (AAA)	Ready to use, designed for frequent use, in high to medium appliances which need frequent recharging.
	Ready to Use min. 1000mAh (AA) and telephone batteries	Ready to use, designed for occasional use or use in appliances which undergo frequent or constant charging – especially DECT phones.
	High Capacity Avg. 2700 mAh (AA) Avg. 1000 mAh (AAA)	Perfect batteries for appliances in need of very high power.

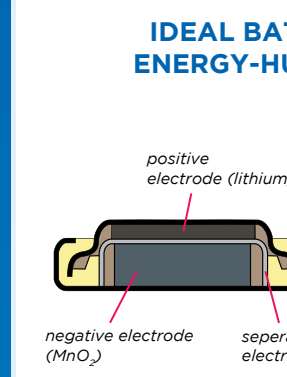
ECO-FRIENDLY: rechargeable up to 1000 times⁽¹⁾ and more



SPECIALTY BATTERIES (DRY-CELL - PRIMARY)

COIN LITHIUM (p. 42-43) 3V

IDEAL BATTERY FOR SMALL, ENERGY-HUNGRY APPLIANCES

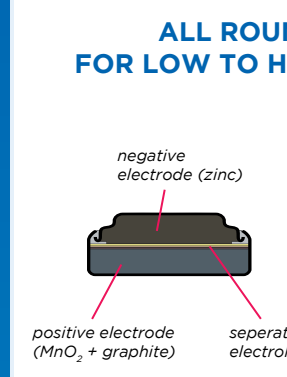


- High energy density
- Long storage life
- No deterioration
- Low self discharge
- Positive electrode = lithium
- Negative electrode = MnO₂
- Suitable for high drain, low drain, pulsed devices

lithium based

MICRO ALKALINE (p. 46-47) 1.5V/12V

ALL ROUND COIN BATTERY FOR LOW TO HIGH DRAIN APPLIANCES

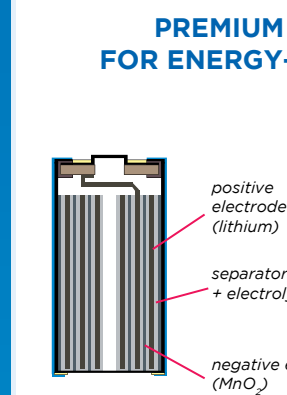


- **Equal construction as standard size alkaline battery**
- Stable discharge
- Excellent leakage resistance
- Negative electrode = zinc
- Positive electrode = MnO₂

zinc based

CYLINDRICAL LITHIUM (p. 44-45) 3V/6V

PREMIUM LITHIUM BATTERY FOR ENERGY-HUNGRY APPLIANCES



- 3 to 5 times higher energy density than standard size alkaline batteries
- Excellent performance in extreme temperatures (-40°C to +70°C)
- Positive electrode = lithium
- Negative electrode = MnO₂

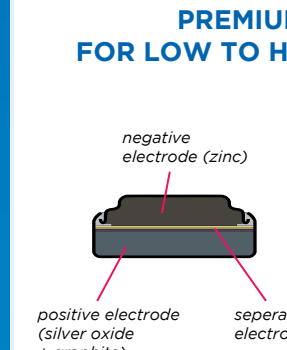
lithium based

*example shown: CR-123



SILVER OXIDE (p. 48-49) 1.55V/6.2V

PREMIUM COIN BATTERY FOR LOW TO HIGH DRAIN APPLIANCES

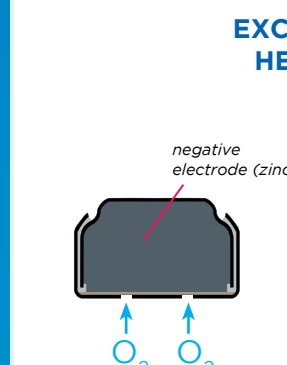


- Higher energy density
- Stable discharge
- Excellent leakage resistance
- Negative electrode = zinc
- Positive electrode = silver oxide
- Extra alkaline electrolyte

zinc based

ZINC AIR (p. 50-51) 1.4V

EXCELLENT FOR HEARING AID



- Highest energy density of all electrochemical systems
- Chemical reaction with oxygen activates the battery
- Only 1 of the active materials inside the battery
- Negative electrode = zinc

zinc based

(1) Panasonic internal testing IEC61951-2 2011(7.5.1.3) on AA 1900 mAh; 500 cycles according to IEC61951-2 2017(7.5.1.4).



Protect Your Precious Appliances

Unique Gas-Suppression Technology

Panasonic Alkaline cells feature advanced Anti-Leak Protection that suppresses the buildup of gas when a battery is over-discharged or stored for a long period. Less pressure means less chance of structural failure and rupture, and protects your valuable appliances from damage.



Store Batteries Safely for Up to 10 Years (2)

You can depend on Panasonic Alkaline batteries to retain high power performance even after very long period in storage. High-quality materials work to prevent degradation while Anti-Leak Protection minimizes the chance of leakage to ensure long-life stability before and during usage.

POWER PROTECTION 10 YEARS
FOR UP TO IN STORAGE

(1) If used correctly (see backside of the blister)

(2) Keeps energy for up to 10 years when not used (LR03 - LR6 - LR14 - LR20). Not valid for APB.

EVOLTA's Technical Innovations



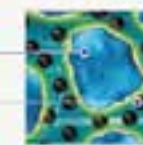
Material Evolution

Thanks to combining exclusive high-reactive ingredients (such as titanium*) and high-purity manganese dioxide, the EVOLTA battery succeeds to generate extra voltage for power-hungry devices.

* Depends on type of battery.

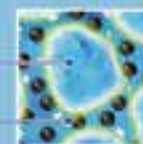
Conventional cell

Manganese dioxide
Graphite



EVOLTA

New high-purity manganese dioxide
Titanium additive*

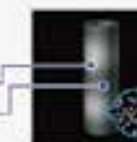


Engineering Evolution

With an homogenised filling density inside the EVOLTA batteries, the current is allowed to flow with much greater consistency, keeping these batteries working when competition has given up.

Conventional cell

Low density
High density



Uneven density

EVOLTA

Homogenised density



Structural Evolution

Longer lasting performance is achieved thanks to an improved structural design allowing more space for active ingredients. A strong internal structure and a tough outer coating ensures far better impact resistance.

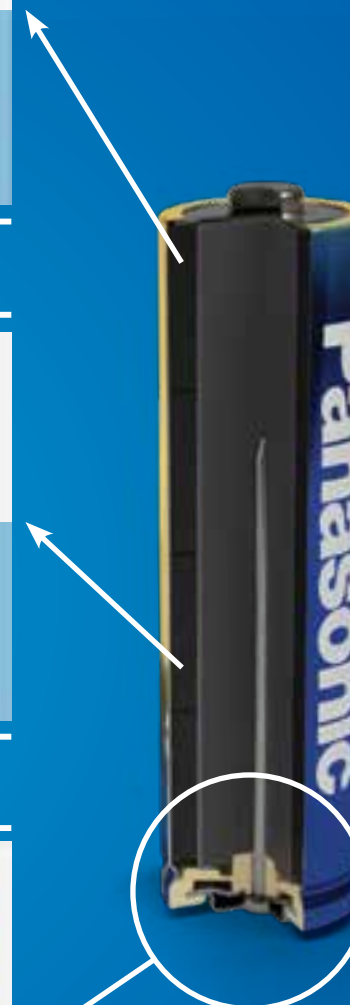
Conventional cell

Uniform can thickness
Less volume
Thick gasket



EVOLTA

Increased inner volume
Ultra-thin can with varied thickness
Thin gasket technology



All these technical innovations make EVOLTA the ULTIMATE LONG LASTING BATTERIES

EVOLTA



The **EVOLTA** concept was born from a combination of “evolution” and “voltage” (power) and our technology has grown to become respected throughout the industry. **EVOLTA** has the ultimate long lasting energy and consistently outperforms our competitors’ premium products in commonly accepted independent performance tests.

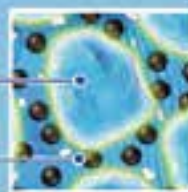


3 Technological Evolutions

Material Evolution

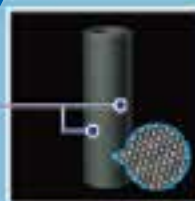
New high-purity manganese dioxide

Titanium additive



Engineering Evolution

Homogenised density



Structural Evolution

Increased inner volume

Ultra-thin can with varied thickness

Thin gasket technology



ULTIMATE LONG LASTING ENERGY



POWER PROTECTION FOR UP TO **10 YEARS**⁽¹⁾ IN STORAGE

ANTI-LEAK PROTECTION⁽²⁾

(1) Keeps energy for up to 10 years when not used (LR03 - LR6 - LR14 - LR20).

(2) If used correctly (see backside of the blister)

Specifications:

STANDARD BLISTERS

Size	CSU EAN	Re-order N°	Batteries/ Blister	Blisters/ Carton	Cartons/ Bundle	Bundles/ Pallet
LR03 / AAA	5410853044840	LR03EGE/2BP	2	12	5	164
	5410853044871	LR03EGE/4BP	4	12	5	164
	5410853044826	LR03EGE/6BP 4+2F	6	12	-	410
LR6 / AA	5410853044758	LR6EGE/2BP	2	12	5	114
	5410853044789	LR6EGE/4BP	4	12	5	114
	5410853044734	LR6EGE/6BP 4+2F	6	12	-	216
LR14 / C	5410853045137	LR14EGE/2BP	2	12	5	75
LR20 / D	5410853045120	LR20EGE/2BP	2	12	5	40
6LR61 / 9V	5410853045144	6LR61EGE/1BP	1	12	5	84



EASY OPENING

WIDEBLISTERS

Size	CSU EAN	Re-order N°	Batteries/ Blister	Blisters/ Carton	Cartons/ Pallet
LR03 / AAA	5410853044796	LR03EGE/8BW 4+4F	8	12	360
	5410853059226	LR03EGE/8BW 5+3F	8	12	360
	5410853044802	LR03EGE/8BW 6+2F	8	12	360
LR6 / AA	5410853044703	LR6EGE/8BW 4+4F	8	12	256
	5410853059219	LR6EGE/8BW 5+3F	8	12	256
	5410853044710	LR6EGE/8BW 6+2F	8	12	256



EVOLTA is most suitable for:



* Not all of the above appliances are suitable for all battery sizes. Please check packaging first.

Pro Power



The **PRO POWER** battery offers premium energy for your personal appliances. It is developed to provide reliable and dependable power, any place and any time. With a complete product line up, the **PRO POWER** battery is ideal for high and medium drain appliances.

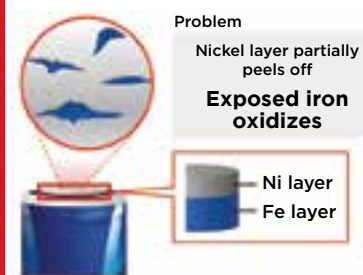


No Poor Connections, No More Stress

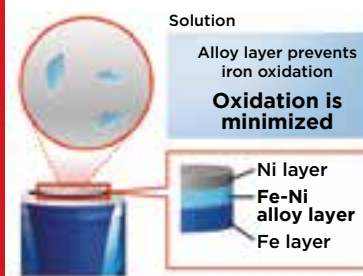
Triple Tough Coating for a Smooth Energy Flow

In conventional batteries, contact resistance on the terminals can build up and cause the nickel layer to peel off and the battery to fail. Triple Tough Coating solves this with an iron/nickel-plated alloy on the positive and negative terminals that improves adhesion and reduces contact resistance. The result? Enhanced energy flow and longer life.

Conventional Structure



Panasonic's Structure



TRIPLE TOUGH COATING

ADVANCED LONG LASTING ENERGY



(1) Keeps energy for up to 10 years when not used (LR03 - LR6 - LR14 - LR20).

(2) If used correctly (see backside of the blister)

POWER PROTECTION FOR UP TO 10 YEARS⁽¹⁾ IN STORAGE

ANTI-LEAK PROTECTION⁽²⁾

Specifications:

STANDARD BLISTERS

Size	CSU EAN	Re-order N°	Batteries/ Blister	Blisters/ Carton	Cartons/ Bundle	Bundles/ Pallet
LR03 / AAA	5410853040125	LR03PPG/2BP	2	12	5	164
	5410853039006	LR03PPG/4BP	4	12	5	164
	5410853040156	LR03PPG/6BP 4+2F	6	12	-	410
LR6 / AA	5410853039891	LR6PPG/2BP	2	12	5	114
	5410853038948	LR6PPG/4BP	4	12	5	114
	5410853039921	LR6PPG/6BP 4+2F	6	12	-	304
LR14 / C	5410853038917	LR14PPG/2BP	2	12	5	75
LR20 / D	5410853038887	LR20PPG/2BP	2	12	5	40
6LF22 / 9V	5410853038979	6LF22PPG/1BP	1	12	5	84
	5410853041573	6LF22PPG/2BP	2	12	5	84
3LR12 / 4.5V	5410853039037	3LR12PPG/1BP	1	12	4	80



EASY OPENING

WIDE BLISTERS

Size	CSU EAN	Re-order N°	Batteries/ Blister	Blisters/ Carton	Cartons/ Pallet
LR03 / AAA	5410853040170	LR03PPG/8BW	8	12	360
	5410853059103	LR03PPG/8BW 5+3F	8	12	360
	5410853040194	LR03PPG/8BW 6+2F	8	12	360
	5410853048497	LR03PPG/10BW 6+4F	10	12	360
	5410853058977	LR03PPG/16BW 10+6F	16	6	360
LR6 / AA	5410853039945	LR6PPG/8BW	8	12	256
	5410853059097	LR6PPG/8BW 5+3F	8	12	256
	5410853039969	LR6PPG/8BW 6+2F	8	12	256
	5410853048480	LR6PPG/10BW 6+4F	10	12	256
LR14 / C	5410853058960	LR6PPG/16BW 10+6F	16	6	256
LR20 / D	5410853041504	LR14PPG/4BW	4	12	336
	5410853041481	LR20PPG/4BW	4	12	98



SPECIAL PACKS

Size	CSU EAN	Re-order N°	Batteries/ CSU	CSU's/ Carton	Cartons/ Pallet
LR03 / AAA	5410853040231	LR03PPG/12HH	12	24	156
	5410853040255	LR03PPG/12HH 8+4F	12	24	156
	5410853049487	LR03PPG/24CD	24	12	200
LR6 / AA	5410853058434	LR03PPG/30BB	30	12	192
	5410853040002	LR6PPG/12HH	12	20	140
	5410853040026	LR6PPG/12HH 8+4F	12	20	140
	5410853049463	LR6PPG/24CD	24	12	115
	5410853058373	LR6PPG/30BB	30	12	105



Multiple use: in shelf, basket, bottom of shelf.

PRO POWER is most suitable for:



* Not all of the above appliances are suitable for all battery sizes. Please check packaging first.

Everyday Power



Panasonic's **EVERYDAY POWER** battery is an ideal power solution for commonly used devices. It provides reliable and dependable power.

EVERYDAY POWER batteries have an excellent price versus quality ratio.



LONG LASTING ENERGY



(1) Keeps energy for up to 10 years when not used (LR03 - LR6 - LR14 - LR20).

POWER PROTECTION FOR UP TO **10 YEARS**⁽¹⁾ IN STORAGE



(2) If used correctly (see backside of the blister)

Specifications:

STANDARD BLISTERS

Size	CSU EAN	Re-order N°	Batteries/ Blister	Blisters/ Carton	Cartons/ Bundle	Bundles/ Pallet
LR03 / AAA	5410853024750	LR03EPS/2BP	2	12	5	164
	5410853048077	LR03EPS/4BP	4	12	5	164
LR6 / AA	5410853024705	LR6EPS/2BP	2	12	5	114
	5410853047964	LR6EPS/4BP	4	12	5	114
LR14 / C	5410853047827	LR14EPS/2BP	2	12	5	75
LR20 / D	5410853047810	LR20EPS/2BP	2	12	5	40
6LF22 / 9V	5410853047971	6LF22EPS/1BP	1	12	5	84



EASY OPENING

WIDE BLISTERS

Size	CSU EAN	Re-order N°	Batteries/ Blister	Blisters/ Carton	Cartons/ Pallet
LR03 / AAA	5410853048015	LR03EPS/8BW	8	12	360
	5410853048008	LR03EPS/8BW 6+2F	8	12	360
	5410853049340	LR03EPS/10BW 6+4F	10	12	360
	5410853048039	LR03EPS/16BW	16	6	360
LR6 / AA	5410853047889	LR6EPS/8BW	8	12	256
	5410853047872	LR6EPS/8BW 6+2F	8	12	256
	5410853049326	LR6EPS/10BW 6+4F	10	12	256
	5410853047902	LR6EPS/16BW	16	6	256



SPECIAL PACKS

Size	CSU EAN	Re-order N°	Batteries/ CSU	CSU's/ Carton	Cartons/ Pallet
LR03 / AAA	5410853051770	LR03EPS/12HH	12	24	156
	5410853061953	LR03EPS/12HH 8+4F	12	24	156
	5410853047995	LR03EPS/24CD	24	12	200
	5410853061618	LR03EPS/40CB	40	6	288
LR6 / AA	5410853051763	LR6EPS/12HH	12	20	140
	5410853047926	LR6EPS/12HH 8+4F	12	24	156
	5410853047841	LR6EPS/24CD	24	12	112
	5410853061601	LR6EPS/40CB	40	6	156



Multiple use: in shelf, basket, bottom of shelf.

EVERYDAY POWER is most suitable for:



* Not all of the above appliances are suitable for all battery sizes. Please check packaging first.

Alkaline Power



Panasonic's **ALKALINE POWER** battery is a value for money solution for everyday appliances. It provides reliable and dependable power, and has an excellent price versus quality ratio.



VALUE FOR YOUR MONEY



POWER PROTECTION FOR UP TO 7 YEARS⁽¹⁾ IN STORAGE

ANTI-LEAK PROTECTION⁽²⁾

(1) Keeps energy for up to 7 years when not used (LR03 - LR6 - LR14 - LR20).

(2) If used correctly (see backside of the blister)

Specifications:

STANDARD BLISTERS	Size	CSU EAN	Re-order N°	Batteries/ Blister	Blisters/ Carton	Cartons/ Bundle	Bundles/ Pallet
	LR03 / AAA	5410853042907	LR03APB/2BP	2	12	5	164
	5410853039334	LR03APB/4BP	4	12	5	164	
LR6 / AA	5410853042259	LR6APB/2BP	2	12	5	114	
	5410853039273	LR6APB/4BP	4	12	5	114	
LR14 / C	5410853039242	LR14APB/2BP	2	12	5	75	
LR20 / D	5410853039211	LR20APB/2BP	2	12	5	40	
6LF22 / 9V	5410853039303	6LF22APB/1BP	1	12	5	84	



EASY OPENING

WIDEBLISTERS	Size	CSU EAN	Re-order N°	Batteries/ Blister	Blisters/ Carton	Cartons/ Pallet
	LR03 / AAA	5410853042174	LR03APB/10BW	10	12	360
	5410853043157	LR03APB/20BW	20	6	360	
LR6 / AA	5410853042167	LR6APB/10BW	10	12	256	
	5410853043133	LR6APB/20BW	20	6	360	



SHRINK PACKS	Size	CSU EAN	Re-order N°	Batteries/ Pack	Packs/ Carton	Cartons/ Bundle	Bundles/ Pallet
	LR03 / AAA	5410853041290	LR03APB/8P	8	6	5	208
LR6 / AA	5410853041238	LR6APB/8P	8	6	5	144	
LR14 / C	5410853041320	LR14APB/4P	4	6	5	88	
LR20 / D	5410853041351	LR20APB/4P	4	6	5	48	



ALKALINE POWER is most suitable for:

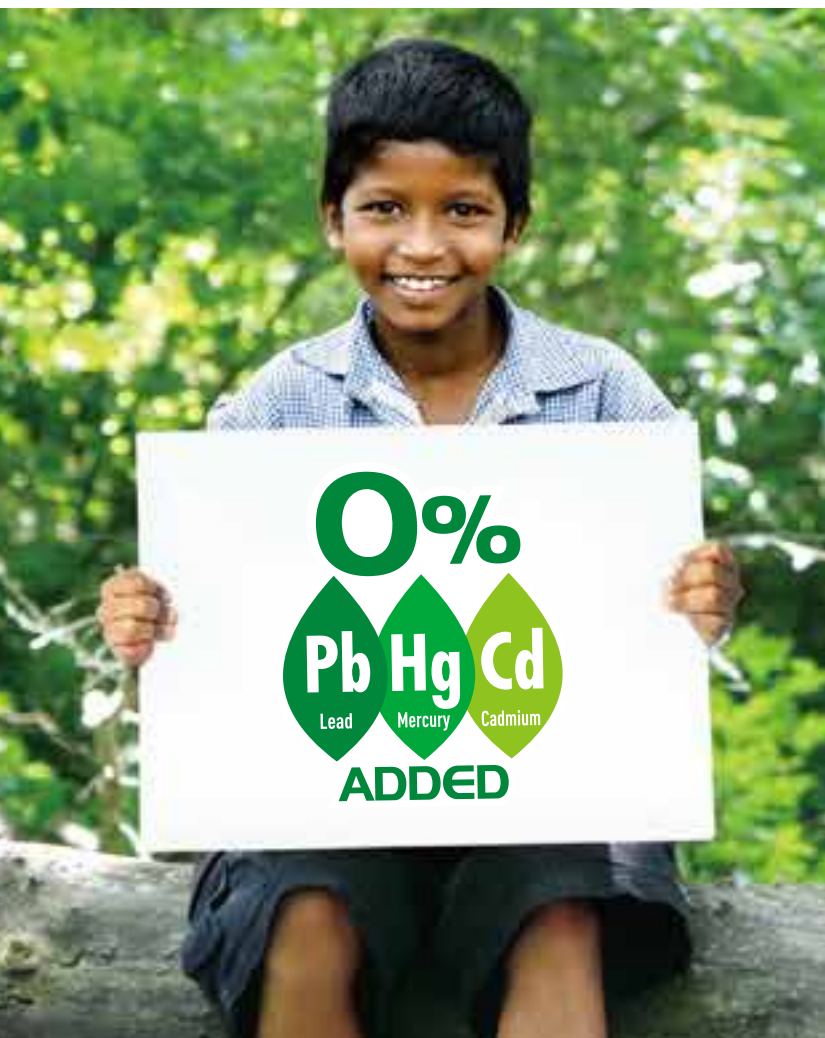


* Not all of the above appliances are suitable for all battery sizes. Please check packaging first.

Zinc Carbon

Red Zinc

Panasonic's **Zinc Carbon** batteries provide an economical power source for low drain devices.



Anti-leak protection by:

- Special sealing structure, which prevents leaking via the carbon rod or zinc can.
- The inner tube is used to prevent leaks caused by runout of the zinc can.
- Strong metallic outer can, to prevent damage caused by external pressure.

SHOULD ONLY BE USED IN LOW DRAIN APPLIANCES !



Specifications:

STANDARD BLISTERS

Size	CSU EAN	Re-order N°	Batteries/ Blister	Blisters/ Carton	Cartons/ Bundle	Bundles/ Pallet
R03 / AAA	5410853032861	R03RZ/4BP	4	12	5	164
R6 / AA	5410853032830	R6RZ/4BP	4	12	5	114
R14 / C	5410853032809	R14RZ/2BP	2	12	5	75
R20 / D	5410853032779	R20RZ/2BP	2	12	5	42
6F22 / 9V	5410853032892	6F22RZ/1BP	1	12	5	84
3R12 / 4.5V	5410853033134	3R12RZ/1BP	1	12	4	80



SPECIAL PACKS

Size	CSU EAN	Re-order N°	Batteries/ Blister	Blisters/ Carton	Cartons/ Pallet
R03 / AAA	5410853051169	R03RZ/12HH	12	20	306
R6 / AA	5410853051152	R6RZ/12HH	12	20	168



SHRINK PACKS

Size	CSU EAN	Re-order N°	Batteries/ Blister	Blisters/ Carton	Cartons/ Bundle	Bundles/ Pallet
R03 / AAA	5410853034889	R03RZ/4P	4	12	5	208
R6 / AA	5410853034872	R6RZ/4P	4	12	5	114



Panasonic's zinc carbon batteries provide an economical power source for low drain devices.

PRODUCT BENEFITS

- Simple and reliable technology
- Excellent price versus quality ratio
- Economical in terms of cost per hour for low drain appliances
- Full and comprehensive product line up
- No mercury and no lead added ⁽¹⁾

Ideal for:







(1) Only for R03RZ, R6RZ, R14RZ & R20RZ.

Ni-MH Rechargeable Ready to Use

Panasonic rechargeable batteries are ready to use immediately after purchase



Why rechargeable batteries?

-  **ECO FRIENDLY**
-  **IDEAL FOR USAGE IN HIGH DRAIN APPLIANCES**
-  **LIFE EXPECTANCY**
Panasonic rechargeable batteries can be charged up to 1000 times⁽¹⁾.
-  **POWER CONSUMPTION**
During usage Panasonic rechargeable batteries offer a more steady flow of energy to the device than alkaline.
-  **COST SAVING**



EU Directive

Rechargeable batteries put on the market from July 2012 onwards must comply with the capacity marking requirements of the EU Battery Directive 2006/66 (as amended). This means that the capacity has to be measured according to international standards and clearly mentioned on any rechargeable battery sold. All of our Panasonic rechargeable batteries comply with this capacity marking regulation because we are an honest and fully compliant supplier for your batteries.

(1) Panasonic internal testing IEC61951-2 2011(7.5.1.3) on AA 1900 mAh; 500 cycles according to IEC61951-2 2017(7.5.1.4).

Panasonic's Ready to Use rechargeable batteries



For **HEAVY** users

For **FREQUENT** users

For **OCCASIONAL** users

For **DECT** telephones

STAY CHARGED 1 YEAR⁽²⁾

ALL PANASONIC RECHARGEABLE BATTERIES ARE PRE-CHARGED AND STAY CHARGED UP TO 365 DAYS.⁽²⁾

READY TO USE AND IDEAL FOR REPEATED USE IN HIGH DRAIN DEVICES.

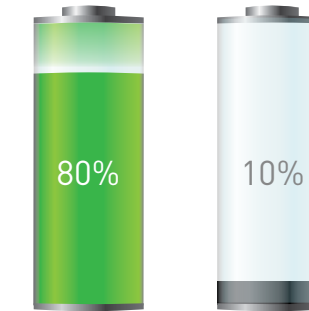
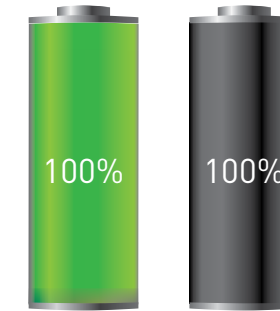
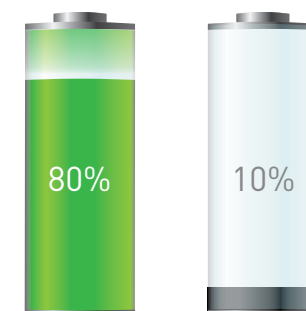
At production⁽³⁾

After charging

After 365 days non-usage⁽²⁾

Ready to use

Still ready to use



PANASONIC Rechargeables Regular Rechargeables

PANASONIC Rechargeables Regular Rechargeables

PANASONIC Rechargeables Regular Rechargeables

All ranges of Panasonic Ready to Use are pre-charged and stay charged up to 365 days.

(2) Approx. 80% capacity after 1 year storage at 20°C. Excluding D/C.

(3) Test conditions - internal Panasonic testing IEC - AA Ready to Use 1900mAh

Ready to Use

min. 2,450_{mAh} (AA) - 900_{mAh} (AAA)



FOR **HEAVY** USERS



HHR-3XXE
AA



HHR-4XXE
AAA

Most suitable for:



Size	Min. capacity mAh	Cycle life	Self discharge after 1 year ⁽¹⁾
AA	2,450 mAh	Up to 500 times ⁽²⁾	80%
AAA	900 mAh	Up to 500 times ⁽²⁾	80%



Specifications:

STANDARD BLISTERS

Size	CSU EAN	Re-order N°	Batteries/ Blister	Blisters/ Carton	Cartons/ Bundle
AA	5410853050872	HHR-3XXE/2BC	2	12	5
AA	5410853050865	HHR-3XXE/4BC	4	12	5
AAA	5410853050896	HHR-4XXE/2BC	2	12	5
AAA	5410853050889	HHR-4XXE/4BC	4	12	5

PRODUCT BENEFITS

- Ready to use: you can use them immediately after purchase
- Stay charged: after 1 year⁽¹⁾
- High capacity: up to 6x longer lasting than Alkaline⁽²⁾
- Combines 'ready to use' with 'high capacity' at the same time
- Specially designed for consumers with a focus on power
- Provide an ideal power solution for frequently used high drain applications

UP TO
6X⁽²⁾
LONG LASTING
VS. ALKALINE

(1) Approx. 80% capacity after 1 year storage at 20°C. Excluding D/C.

(2) Panasonic internal testing.

Ready to Use

min. 1,900_{mAh} (AA) - 750_{mAh} (AAA)



**FOR
FREQUENT
USERS**



HHR-3MVE
AA



HHR-4MVE
AAA

Most suitable for:



Size	Min. capacity mAh	Cycle life	Self discharge after 1 year ⁽¹⁾
AA	1,900 mAh	Up to 1,000 times ⁽²⁾	80%
AAA	750 mAh	Up to 1,600 times ⁽²⁾	80%



Specifications:

STANDARD BLISTERS

Size	CSU EAN	Re-order N°	Batteries/ Blister	Blisters/ Carton	Cartons/ Bundle
AA	5410853045243	HHR-3MVE/2BC	2	12	5
AA	5410853045250	HHR-3MVE/4BC	4	12	5
AAA	5410853045267	HHR-4MVE/2BC	2	12	5
AAA	5410853045274	HHR-4MVE/4BC	4	12	5
C	5410853034537	HHR-2SRE/2B ⁽²⁾	2	12	5
D	5410853034520	HHR-1SRE/2B ⁽²⁾	2	12	5



PRODUCT BENEFITS

- Ready to use: you can use them immediately after purchase
- Stay charged: after 1 year⁽¹⁾
- Combines the convenience of a disposable battery with the performance and cost benefits of a rechargeable battery
- Ideal for the frequent rechargeable battery user

**STAY
CHARGED
AFTER
1 YEAR⁽¹⁾**

⁽¹⁾ Approx. 80% capacity after 1 year storage at 20°C. Excluding D/C.

Ready to Use

min. 1,000_{mAh} (AA) and telephone batteries



FOR
OCCASIONAL
USERS



HHR-3LVE
AA

Most suitable for:



Ready to Use 1000

Size	Min. capacity mAh	Cycle life	Self discharge after 1 year ⁽¹⁾
AA	1,000 mAh	Up to 2,100 times ⁽²⁾	80%

Telephone batteries

Size	Min. capacity mAh	Cycle life	Self discharge after 1 year ⁽¹⁾
AA	1,000 mAh	Up to 2,100 times ⁽²⁾	80%
AAA	750 mAh	Up to 1,600 times ⁽²⁾	80%



Specifications:

STANDARD BLISTERS

Size	CSU EAN	Re-order N°	Batteries/ Blister	Blisters/ Carton	Cartons/ Bundle
AA	5410853046011	HHR-3LVE/2BC	2	12	5
AA	5410853045304	HHR-3LVE/4BC	4	12	5
AAA	5410853045359	HHR-4MVE/2BD	2	12	5
AAA	5410853045366	HHR-4MVE/3BD	3	12	5

READY TO USE 1000 PRODUCT BENEFITS

- Ready to use: you can use them immediately after purchase
- Stay charged: after 1 year⁽¹⁾
- Ideal for the occasional rechargeable battery user
- Long cycle life: up to 2,100 cycles⁽²⁾

TELEPHONE BATTERIES PRODUCT BENEFITS

- Providing an ideal power solution for cordless communication appliances
- Packaging quantities in blister adapted to most frequently used appliances such as DECT phones or walkie talkies

(1) Approx. 80% capacity after 1 year storage at 20°C. Excluding D/C.

(2) Panasonic internal testing IEC61951-2 2011(7.5.1.3); 500 cycles according to IEC61951-2 2017(7.5.1.4).

CHARGERS

5 YEAR WARRANTY

HEAVY USERS

Smart & Quick charger – BQ CC55

- Rapid charge
- Individual management/charge control (“Smart Charge⁽¹⁾”)
- Can be used all over the world (100-240 V)
- Case color: white



Item	Specifications
Input	AC100-240V 50-60Hz
Input part Structure	Fixed plug
Charging control	Smart Charge ¹ / -ΔV / Timer
Indicator	LED x 4 Charging: ON, Fully charged: OFF
Charger battery	AA x 1, 2, 3, 4 / AAA x 1, 2, 3, 4 cells
Charging time ⁽²⁾	AA: Approx 1.5 hours / 3 hours [2,000 mAh] AAA: Approx 1.5 hours / 3 hours [800 mAh]
Charger size (W x H x D)	68 x 120 x 65.5 mm (EU) / 68 x 121 x 62 mm (UK)
Weight	with EU-plug: 124 g - with UK-plug: 131 g

⁽¹⁾ This charger has “Smart Charge” function which checks voltage and temperature of battery automatically. Thanks to Smart Charge function, it saves time of charging and loss of energy & money.

FREQUENT USERS

Advanced charger – BQ CC17

- Can charge AA / AAA 4 cells
- Can be used all over the world (100-240 V)
- Individual management/-ΔV Control
- Case color: white



Item	Specifications
Input	AC 100-240 V 50-60 Hz
Input part Structure	Fixed plug
Charging control	-ΔV /Timer
Indicator	LED x 4 Charging: ON, Fully charged: OFF
Charger battery	AA x 1, 2, 3, 4 / AAA x 1, 2, 3, 4 cells
Charging time ⁽²⁾	AA: Approx 7h [2,000 mAh]; AAA: Approx 6h [800 mAh]
Charger size (W x H x D)	65 x 105 x 65 mm
Weight	107 g

OCCASIONAL USERS

Basic charger – BQ CC51

- Can charge AA / AAA 2 or 4 cells
- Can be used all over the world (100-240 V)
- Timer control
- Case color: white



Item	Specifications
Input	AC 100-240 V 50-60 Hz
Input part Structure	Fixed plug
Charging control	Timer cut (13 hours)
Indicator	LED x 2 Charging: ON, Fully charged: OFF
Charger battery	AA x 2, 4 / AAA x 2, 4 cells
Charging time ⁽²⁾	AA: Approx 10h [2,000 mAh]; AAA: Approx 10h [800 mAh]
Charger size (W x H x D)	66 x 108 x 65.1 mm (EU) / 66 x 108 x 62 mm (UK)
Weight	with EU-plug: 100 g - with UK-plug: 110 g

⁽²⁾ AA/AAA 4 cells.

PRODUCT BENEFITS

- Improved consumer communication, designed to aid product rotation
- Clear time indications and features
- Free 5 year warranty for added reassurance
- All chargers have lead-free soldering, less harmful for the environment
- Worldwide compatibility
- Safety: non rechargeable detection
- LED Timer ready indication
- For all Ni-MH batteries

Compact charger – BQ CC50

- Can charge AA / AAA 2 cells
- Can be used all over the world (100-240 V)
- Safety timer: max. 13h
- Case color: white

Item	Specifications
Input	AC 100-240 V 50-60 Hz
Input part Structure	Fixed plug
Charging control	Timer cut (13 hours) Individual
Indicator	LED x 2 Charging: ON, Fully charged: OFF
Charger battery	AA x 1, 2 / AAA x 1, 2 cells
Charging time ⁽²⁾	AA: Approx 10h [2,000 mAh]; AAA: Approx 10h [800 mAh]
Charger size (W x H x D)	50 x 121 x 66.2 mm (EU) / 50 x 121 x 61.2 mm (UK)
Weight	with EU-plug: 86 g - with UK-plug: 96 g



ENTRY USERS

Universal charger – BQ CC15

- Can charge AA / AAA / C / D 1-4 cells
- Can charge 9V 1-2 cells
- Can be used all over the world (100-240 V)
- Automatic switch-off when charged (-ΔV)
- Case color: white

Item	Specifications
Input	AC 100-240 V 50-60 Hz
Input part Structure	AC cable
Charging control	-ΔV /Timer (excl. 9V battery)
Indicator	LED x 2 Charging: ON, Fully charged: OFF
Charger battery	AA x 1-4 / AAA x 1-4 / C x 1-4 / D x 1-4 / 9V x 1-2 cells
Charging time ⁽²⁾	AA: Approx 6h [2,000 mAh]; AAA: Approx 6h [800 mAh]
Charger size (W x H x D)	110 x 200 x 55 mm
Weight	with EU-plug: 489 g - with UK-plug: 499 g



MULTI BATTERY TYPES

Specifications:

Charger	Re-order N° (Kit)	CSU EAN	Batteries included in kit	Blister size (mm) (W x H x D)	Blisters/ Carton
BQ-CC55	K-KJ55MGD40E	5410853057789	4x P6 1900	105 x 200 x 72	8
BQ-CC55	K-KJ55MGD40U	5410853057802	4x P6 1900	105 x 200 x 72	8
BQ-CC17	K-KJ17MGD40E	5410853057796	4x P6 1900	105 x 200 x 72	8
BQ-CC51	K-KJ51MGD42E	5410853056973	4x P6 1900 / 2x P03 750	105 x 200 x 72	8
BQ-CC51	K-KJ51MGD40U	5410853057819	4x P6 1900	105 x 200 x 72	8
BQ-CC50	K-KJ50LGA20E	5410853056966	2x P6 1900	105 x 200 x 72	8
BQ-CC15	BQ-CC15E	5025232672141	-	167 x 342 x 67	8

⁽³⁾ AA/AAA 2 cells.

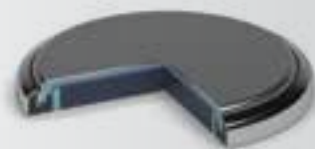
COIN LITHIUM

SPECIAL PANASONIC SEALING TECHNOLOGY

Ensure a low self discharge rate and high battery performance especially after storage.

LONG-TERM DISCHARGE

Reaction materials in lithium batteries are more stable than other batteries. To ensure longer service life, Panasonic evaluates its lithium batteries in all conditions over longer periods.



Child safety packaging

Lithium battery storage safety tips:

- Keep all batteries in a sealed container in a high cupboard.
- Keep products well out of reach if the battery compartment isn't secured.
- Put 'flat' or 'dead' batteries out of reach straight away and recycle safely.



We recommend to keep batteries out of childrens' reach. If you suspect your child has swallowed a lithium battery, act this:

- Take your child straight to hospital.
- Do not let your child eat or drink.
- Do not induce vomiting.

For more info, visit our website: www.panasonic-batteries.com

FOR LONG LASTING POWER



Specifications:

BLISTERS

Model N°	CSU EAN	Re-order N°	Batteries/ Blister	Blisters/ Innercarton	Innecartons/ Bundle
CR1025	5410853010227	CR-1025EL/1B	1	12	10
CR1216	5410853010210	CR-1216EL/1B	1	12	10
CR1220	5019068085091	CR-1220EL/1B	1	12	10
CR1616	5019068085107	CR-1616EL/1B	1	12	10
CR1620	5025232068258	CR-1620EL/1B	1	12	10
CR1632	5410853038320	CR-1632EL/1B	1	12	10
CR2012	5410853038450	CR-2012EL/1B	1	12	10
CR2016	5019068085114	CR-2016EL/1B	1	12	10
	5025232060665	CR-2016EL/2B	2	12	10
	5410853059028	CR-2016EL/4B	4	12	10
	5410853043812	CR-2016EL/6BP	6	20	5
CR2025	5019068085121	CR-2025EL/1B	1	12	10
	5025232060672	CR-2025EL/2B	2	12	10
	5410853059035	CR-2025EL/4B	4	12	10
	5410853043829	CR-2025EL/6BP	6	20	5
CR2032	5019068085138	CR-2032EL/1B	1	12	10
	5025232060689	CR-2032EL/2B	2	12	10
	5410853058663	CR-2032EL/4B	4	12	10
	5410853043836	CR-2032EL/6BP	6	20	5
CR2354	5410853038481	CR-2354EL/1B	1	12	10
CR2430	5410853012313	CR-2430EL/1B	1	12	10
CR2450	5410853014355	CR-2450EL/1B	1	12	10



Child safety packaging

COIN LITHIUM is most suitable for:



HIGH VOLTAGE
Panasonic coin lithium batteries give more power with an output of 3V

-30 °C UP TO 60 °C
This battery offers reliable power even in a wide range of operating temperatures

UP TO 10 YEARS
These batteries can be stored for up to 10 years without use

0% Hg added
ECO BENEFITS
Panasonic coin lithium batteries have 0% mercury added

CYLINDRICAL LITHIUM



**FOR LIGHT WEIGHT
APPLIANCES
THAT NEED POWER**



CR2



CR123



2CR5



CRP2



Example shown:
CR-123 battery

SAFETY GUARANTEE

Using 4 built-in safety features, Panasonic ensures a safe structure for its cylindrical lithium batteries and a power cut off in case of overload.

EXCELLENT PERFORMANCE IN EXTREME TEMPERATURES

Thanks to the unique composition of lithium and manganese dioxide, this battery is able to function in extreme temperatures (-40°C to +70°C) without hesitance.

Specifications:

BLISTERS

Model N°	CSU EAN	Re-order N°	Batteries/ Blister	Blisters/ Innecarton	Innecartons/ Bundle
CR2	5025232016082	CR-2L/1BP	1	10	10
	5410853013464	CR-2L/2BP	2	10	10
CR123	5410853017097	CR-123AL/1BP	1	10	10
	5410853017110	CR-123AL/2BP	2	10	10
2CR5	5410853017158	2CR-5L/1BP	1	10	10
CRP2	5410853017134	CR-P2L/1BP	1	10	10



**EASY
OPENING**

CYLINDRICAL LITHIUM is most suitable for:



HIGHER ENERGY DENSITY
Due to lithium based reliable power

-40 °C UP TO 70 °C
Lithium batteries offer reliable power in extreme temperatures



UP TO 10 YEARS
These batteries can be stored for up to 10 years without use



RAPID FLASH RECOVERY TIME
Low internal resistance to provide rapid flash recovery and quick shooting

MICRO ALKALINE



FOR SMALL APPLIANCES WITH LONG LASTING POWER

LR41

LR44

LR1130

LRV08

LR1



STABLE DISCHARGE PERFORMANCE
Due to Panasonic's innovative techniques, our Micro Alkaline products are designed to guarantee optimal and stable discharge results, as well as excellent high-drain discharge characteristics.

OPTIMAL LEAKAGE RESISTANCE
As a result of our excellent sealing technique Panasonic Micro Alkaline batteries have an optimal leakage resistance.

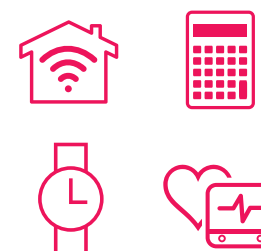
Specifications:

BLISTERS

Model N°	CSU EAN	Re-order N°	Batteries/Blister	Blisters/Innercarton	Innercartons/Bundle
LR41	5410853061700	LR-41EL/1B	1	12	10
LR44	5019068083035	LR-44EL/1B	1	12	10
	5410853018469	LR-44EL/2B	2	12	10
	5410853049135	LR-44L/6BP	6	20	-
LR1130	5019068083011	LR-1130EL/1B	1	12	10
LRV08	5410853057345	LRV08L/1BE	1	10	10
	5410853057376	LRV08L/2BE	2	10	10
LR1	5019068592551	LR1L/1BE	1	10	10



MICRO ALKALINE is most suitable for:



STABLE DISCHARGE
Optimal & stable discharge results and excellent high drain discharge characteristics

OPTIMAL LEAKAGE RESISTANCE
Designed to avoid leakage as a result of advanced sealing technique

0% Hg added
ECO BENEFITS
Panasonic micro alkaline batteries have 0% mercury added

UP TO 3 YEARS
These batteries can be stored for up to 3 years without use

SILVER OXIDE



**FOR SMALL
HIGH DRAIN
APPLIANCES**



HIGH ENERGY DENSITY
Panasonic's know-how in materials, such as antioxidant and high performance separators, results in a high energy density and improved storage characteristics.

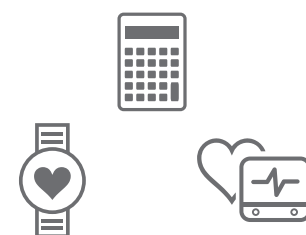
CONSTANT VOLTAGE OUTPUT
A stable discharge performance can be guaranteed using silver as one of the active components within the button cell.

Specifications:

Model N°	CSU EAN	Re-order N°	Batteries/ Blister	Blisters/ Innecarton	Innecartons/ Bundle
SR521	5410853035466	SR-521EL/1B	1	12	10
SR616	5410853035473	SR-616EL/1B	1	12	10
SR621	5410853035480	SR-621EL/1B	1	12	10
SR626	5410853035497	SR-626EL/1B	1	12	10
SR721	5410853035503	SR-721EL/1B	1	12	10
SR920	5410853035527	SR-920EL/1B	1	12	10
SR927	5410853035534	SR-927EL/1B	1	12	10
SR936	5410853035541	SR-936EL/1B	1	12	10
SR1130	5410853035428	SR-1130EL/1B	1	12	10
SR41	5410853035435	SR-41EL/1B	1	12	10
SR44	5410853013976	SR-44EL/1B	1	12	10
4SR44	5410853013990	4SR44L/1BP	1	10	10



SILVER OXIDE
is most suitable for:



HIGH PERFORMANCE
Premium materials (silver) and construction (separator) ensures a high battery performance

STABLE DISCHARGE
Premium materials (silver) ensure a stable discharge performance

ECO BENEFITS
Panasonic silver oxide batteries have 0% mercury added

UP TO 3 YEARS
These batteries can be stored for up to 3 years without use

ZINC AIR



UNIQUE COMPOSITION

Zinc air batteries are unique within the Panasonic range, as only one of the active materials is inside the battery. When tearing off the tab, oxygen enters and activates the battery.

HIGHEST ENERGY DENSITY

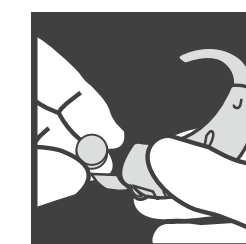
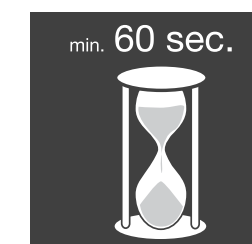
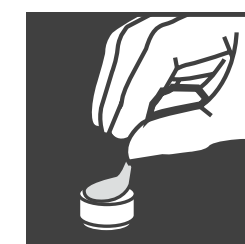
With the highest energy density of all electrochemical systems and due to their small size, these batteries are excellent to power small energy-hungry devices in need of continuous discharge.

Specifications:

BLISTERS	Model N°	CSU EAN	Re-order N°	Batteries/ Blister	Blisters/ Innercarton	Innercartons/ Bundle
	PR10 (PR230/PR536)	5410853057024	PR-10L/6LB	6	10	5
	PR13 (PR48)	5410853057017	PR-13/6LB	6	10	5
	PR312 (PR41)	5410853057031	PR-312/6LB	6	10	5
	PR675 (PR44)	5410853057048	PR-675/6LB	6	10	5

Compact sized blisters. Easy to stow away; fits in purse or wallet.

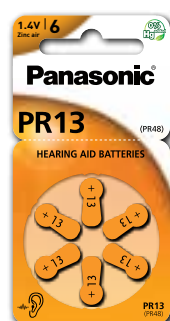
USER GUIDELINES:



FOR HEARING AID



PR10



PR13



PR312



PR675

ZINC AIR is suitable for:



LONGER PERFORMANCE
Designed to provide longer lasting performance in appliances



NEW GENERATION
Excellent for the latest generation of Bluetooth hearing aids



VARIOUS TEMPERATURE CONDITIONS
The battery gives a reliable power in various temperature conditions to enjoy outdoor activities longer.



STEADY HIGH PERFORMANCE LEVEL
The energy stays the best at all time in this light weight battery.

DISPLAYS

Multiple locations in store

As battery purchases are mainly impulse driven, locating batteries at multiple locations in stores is very important: at the battery shelf, near the toy/electro shelf, in secondary placement via displays and at the checkout. Placing displays at multiple locations is the key to a successful battery business and can lead to a significant increase in sales.



DISPLAYS AT MULTIPLE LOCATIONS

- 1 standard battery shelf
- 2 displays near battery operated appliances (e.g. toys, electronics, DECT phones)
- 3 floor displays at gondola end
- 4 side hangers
- 5 magnetic displays (e.g. attached to baskets)
- 6 counter displays at checkout

COIN COUNTER DISPLAY

Carton promotional

BOOST YOUR SALES & MARGINS
with a dedicated **COIN COUNTER DISPLAY**



COIN REFERENCE TABLE ON BACKSIDE!

- ✓ Growing category: +12% pieces sold in 2018 vs. 2017 ⁽¹⁾
- ✓ Child safety / anti-theft packaging
- ✓ Long shelf life (10 years)
- ✓ Reliable and long lasting power



4 in 1



STAND ALONE STACKABLE



ON TOP OF FLOOR DISPLAYS HANGING ON HOOKS
SHELF OPTIMIZER
5 REFERENCES ON 3 HOOKS ⁽²⁾

3 VERSIONS AVAILABLE



(1) GfK 2018/12 EU6; 2018 vs 2017 in pieces of miniature cells.

COUNTER DISPLAYS & CLIPSTRIPS

Carton promotional



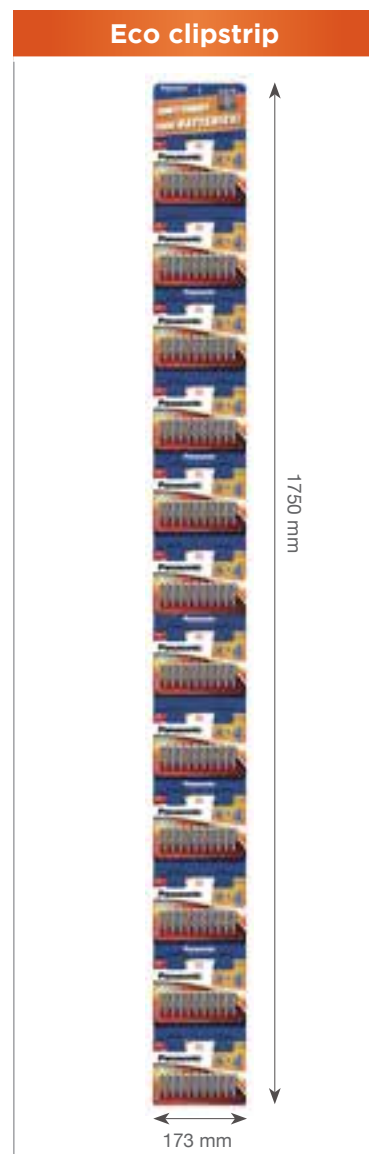
- Horizontal facing
- Pre-filled
- Suitable for different types of packaging
- Topcard with extra communication possible

Height excl. topcard	90 mm
Width	190 mm
Depth	390 mm
Topcard dimensions	H 185 x W 170 mm
Net weight ⁽¹⁾	0.155 kg
# product facings	N.A.
Max # AA/8BW	30
Possible with or without topcard	



- 4 IN 1 DISPLAY**
- Stand alone
 - Stackable
 - On top of a 15WSU floor display
 - Hanging on hooks

Height incl. topcard	185 mm
Width	275 mm
Depth	62 mm
Topcard dimensions	H 55 x W 273 mm
Net weight	0.107 kg
# product facings	5 (3 if 4BP)
Max # AA/8BW	60 (36 if 4BP)
# displays / pallet	288



- Pre-filled
- Folded in a small box for shipping
- Takes up no shelf space
- Excellent product visibility & accessibility

Height incl. topcard	1750 mm
Width	173 mm
Depth	1 mm
Topcard dimensions	H 55 x W 273 mm
Net weight ⁽¹⁾	0.120 kg
# product facings	12 (24 if 4BP)
Max # AA/8BW	12 (24 if 4BP)
# displays/pallet	168 (AA, mix) or 216 (AAA)



- Vertical facing (shelf ready packaging)
- Pre-filled
- Stackable
- Flip-up topcard

Height incl. topcard	260 mm
Width	190 mm
Depth	195 mm
Topcard dimensions	H 135 x W 190 mm
Net weight ⁽¹⁾	0.110 kg
# product facings	1 (2 if 4BP)
Max # AA/8BW	12
Possible with or without topcard	



- Qualitative counter display
- Pre-filled
- Flip-up topcard
- Excellent product visibility & accessibility

Height incl. topcard	265 mm
Width	375 mm
Depth	185 mm
Topcard dimensions	H 141 x W 375 mm
Net weight ⁽¹⁾	0.147 kg
# product facings	2 (4 if 4BP)
Max # AA/8BW	24

Counter display F2

Item code	EAN	Product description	#blisters	AA # CSU	AAA # CSU	CR2032 # CSU	Retail	Discount
00730859A	5410853061304	Codis F2 LR6EPS/10BW 6+4F	12	12	0	0	•	•
00760859A	5410853061311	Codis F2 LR03EPS/10BW 6+4F	16	0	16	0	•	•

Counter display F4

Item code	EAN	Product description	#blisters	AA # CSU	AAA # CSU	CR2032 # CSU	Retail	Discount
00705998	5410853063544	Codis F4 LR6+LR03PPG+CR2032/4BP	54	28	20	6	•	
00705956A	5410853062615	Codis F4 LR6+LR03PPG/10BW 6+4F	28	12	16	0	•	
00700899H	5410853051213	Codis F4 LR6+LR03EPS/4BP	52	36	16	0		•
00701959A	5410853053057	Codis F4 LR6+LR03APB/10BW	24	14	10	0		•
00701999H	5410853051244	Codis F4 LR6+LR03APB/4BP	52	36	16	0		•

Coin counter display

Item code	EAN	Product description	#blisters	CR2016 # CSU	CR2025 # CSU	CR2032 # CSU	LR44 # CSU	LRV08 # CSU	Retail	Discount
00700096(A)	5410853061991	Coin codis CR2016+CR2025+CR2032/4B	36	12	12	12	0	0	•	
00700097(A)	5410853061984	Coin codis CR2016+25+32+LR44+LRV08/2B	52	12	12	12	4	12	•	
00700098A	5410853061977	Coin codis CR2016+CR2025+CR2032/2B	60	12	12	36	0	0	•	

Eco Clipstrip

Item code	EAN	Product description	#blisters	AA # CSU	AAA # CSU	Retail	Discount
00936445A	5410853063605	Eco clipstrip LR6EGE/8BW 4+4F	12	12	0	•	
00966445A	5410853063612	Eco clipstrip LR03EGE/8BW 4+4F	12	0	12	•	
00935957A	5410853063629	Eco clipstrip LR6PPG/10BW 6+4F	12	12	0	•	
00965957A	5410853063636	Eco clipstrip LR03PPG/10BW 6+4F	12	0	12	•	
00930859A	5410853063643	Eco clipstrip LR6EPS/10BW 6+4F	12	12	0	•	
00960859A	5410853063650	Eco clipstrip LR03EPS/10BW 6+4F	12	0	12	•	

FLOOR DISPLAYS

Carton promotional



- Pop-up foot & flip-up topcard
- Pre-filled
- Easy to mount / fast setup
- Less waste (only carton materials)
- Display fits in a car

Height incl. topcard	1300 mm
Width	375 mm
Depth	435 mm
Topcard dimensions	H 340 x W 375 mm
Net weight ⁽¹⁾	3.25 kg
# product facings	12
# trays	2
# Max. AA/8BW	108
# displays/pallet	12



- Flip-up topcard
- Pre-filled & mounted, less handling
- Delivered on 1/4 pallet for safe and easy transportation
- Mono material carton display
- 100% ready to sell

Height incl. topcard & pallet	1625 mm
Width	560 mm
Depth	395 mm
Topcard dimensions	H 320 x W 560 mm
Net weight ⁽¹⁾	4.6 kg
# product facings	15
# trays	N.A.
# Max. AA/8BW	213
# displays/pallet	4



- Pre-filled & mounted
- Delivered on 1/4 pallet for safe and easy transportation
- Suitable for different types of packaging
- Mono material carton display

Height incl. topcard & pallet	1375 mm
Width	400 mm
Depth	600 mm
Topcard dimensions	H 400 x W 395 mm
Net weight ⁽¹⁾	3.77 kg
# product facings	N.A.
# trays	4
# Max. AA/8BW	196
# displays/pallet	4

12W Pop up floor display

Item code	EAN	Product description	#blisters	AA # CSU	AAA # CSU	9V # CSU	Retail	Discount	Comment
00611640A	5410853063285	Flodis 12WPU LR6+LR03EGE/8BW 5+3F SMART	151	89	62	0	•		
00611516A	5410853063261	Flodis 12WPU LR6+LR03PPG/8BW SMART	151	89	62	0	•		
00611540A	5410853062776	Flodis 12WPU LR6+LR03PPG/8BW 6+2F SMART	151	89	62	0	•		Stock display
00611558A	5410853063278	Flodis 12WPU LR6+LR03PPG/10BW 6+4F SMART	123	74	49	0	•		Stock display
00611258A	5410853063254	Flodis 12WPU LR6+LR03EPS/10BW 6+4F SMART	123	74	49	0	•	•	Stock display
00611298(A)	5410853063711	Flodis 12WPU LR6+LR03/4BP+9V/1BP EPS SMART	338	174	140	24			
00611398(A)	5410853063728	Flodis 12WPU LR6+LR03/4BP+9V/1BP APB SMART	338	174	140	24			

15W Set up floor display

Item code	EAN	Product description	#blisters	AA # CSU	AAA # CSU	Retail	Discount	Comment
00625646A	5410853063315	Flodis 15WSU LR6+LR03EGE/8BW 4+4F SMART	320	190	130	•		
00625599A	5410853063537	Flodis 15WSU LR6+LR03PPG/4BP SMART	640	380	260	•		
00625546A	5410853062769	Flodis 15WSU LR6+LR03PPG/8BW 6+2F SMART	320	190	130	•		
00625518(A)	5410853063568	Flodis 15WSU LR6+LR03PPG/8BW 4+4F SMART	320	190	130		•	
00625558A	5410853063353	Flodis 15WSU LR6+LR03PPG/10BW 6+4F SMART	255	153	102	•		Stock display
00625565A	5410853062523	Flodis 15WSU LR6+LR03PPG/12HH 8+4F	225	135	90	•		
00625556A	5410853063346	Flodis 15WSU LR6+LR03PPG/16BW 8+8F SMART	164	98	66	•	•	
00625258A	5410853063308	Flodis 15WSU LR6+LR03EPS/10BW 6+4F SMART	255	153	102	•	•	Stock display
00625271A	5410853063339	Flodis 15WSU LR6+LR03EPS/20BW 12+8F SMART	136	81	55	•		
00625242A	5410853063322	Flodis 15WSU LR6+LR03EPS/20BW 10+10F SMART	136	81	55	•	•	

(1) Displays weight is excluding display filling.

NOTE: Display types may vary from country to country. Please contact your local representative/dealer.

COUNTER DISPLAYS

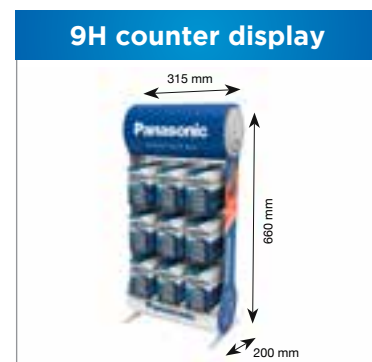
Metal permanent



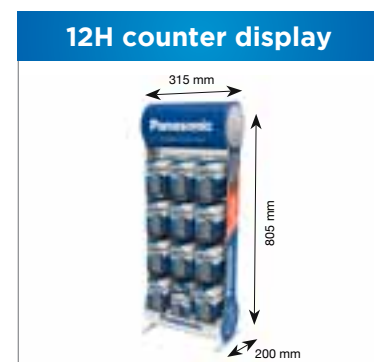
Height	655 mm
Width	220 mm
Depth	200 mm
Net weight ⁽¹⁾	2.5 kg
N° of hooks	6 fixed
Hook length	18 cm
Max. # AA/4BP per hook	12
Max. # AAA/4BP per hook	16
Max. # C/2BP per hook	8
Max. # D/2BP per hook	6
Max. # 9V/1BP per hook	11
For single blisters and wideblisters	



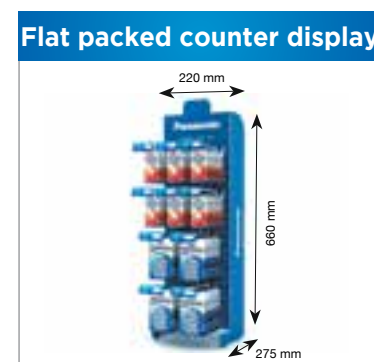
Height	655 mm
Width	220 mm
Depth	200 mm
Net weight ⁽¹⁾	2.5 kg
N° of hooks	6 fixed
Hook length	18 cm
Max. # AA/4BP per hook	12
Max. # AAA/4BP per hook	16
Max. # C/2BP per hook	8
Max. # D/2BP per hook	6
Max. # 9V/1BP per hook	11
For single blisters and wideblisters	



Height	660 mm
Width	315 mm
Depth	200 mm
Net weight ⁽¹⁾	3.4 kg
N° of hooks	9 fixed
Hook length	18 cm
Max # AA/4BP per hook	12
Max # AAA/4BP per hook	16
Max # C/2BP per hook	8
Max # D/2BP per hook	6
Max. # 9V/1BP per hook	11
For single blisters and wideblisters	



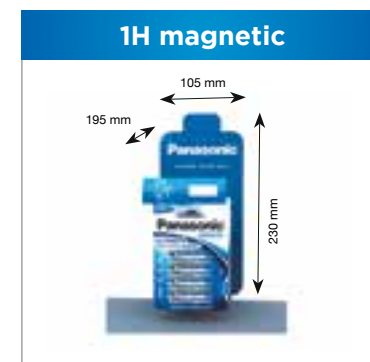
Height	805 mm
Width	315 mm
Depth	200 mm
Net weight ⁽¹⁾	3.7 kg
N° of hooks	12 fixed
Hook length	18 cm
Max # AA/4BP per hook	12
Max # AAA/4BP per hook	16
Max # C/2BP per hook	8
Max # D/2BP per hook	6
Max. # 9V/1BP per hook	11
For single blisters and wideblisters	



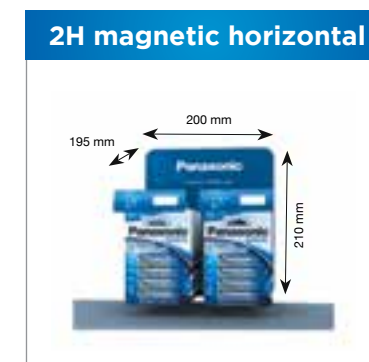
Height	660 mm
Width	220 mm
Depth	275 mm
Net weight ⁽¹⁾	3.192 kg
N° of hooks	10
Hook length	16.5 cm
Max. # AA/4BP per hook	12
Max. # AAA/4BP per hook	15
Max. # C/2BP per hook	6
Max. # D/2BP per hook	5
Max. # 9V/1BP per hook	9
Max. # coin/1B per hook	36
For single blisters and wideblisters	

MAGNETIC DISPLAYS

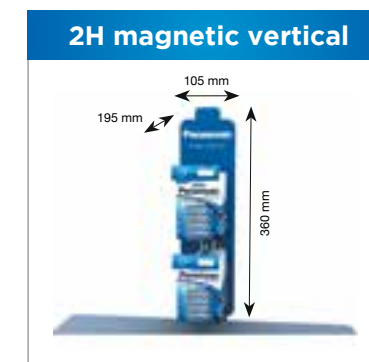
Metal permanent



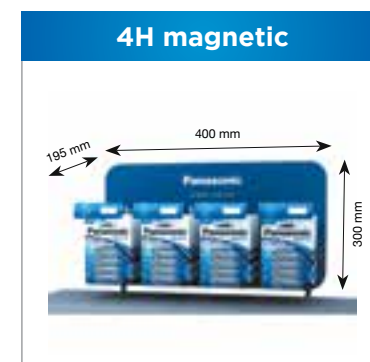
Height	230 mm
Width	105 mm
Depth	195 mm
Net weight ⁽¹⁾	0.382 kg
N° of hooks	1
Hook length	16.5 cm
Max # AA/4BP per hook	12
Max # AAA/4BP per hook	15
Max # C/2BP per hook	6
Max # D/2BP per hook	5
Max. # 9V/1BP per hook	9
For single blisters only	



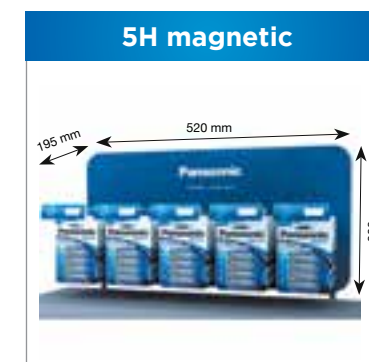
Height	210 mm
Width	200 mm
Depth	195 mm
Net weight ⁽¹⁾	0.926 kg
N° of hooks	2
Hook length	16.5 cm
Max # AA/4BP per hook	12
Max # AAA/4BP per hook	15
Max # C/2BP per hook	6
Max # D/2BP per hook	5
Max. # 9V/1BP per hook	9
For single blisters and wideblisters	



Height	360 mm
Width	105 mm
Depth	195 mm
Net weight ⁽¹⁾	0.708 kg
N° of hooks	2
Hook length	16.5 cm
Max # AA/4BP per hook	12
Max # AAA/4BP per hook	15
Max # C/2BP per hook	6
Max # D/2BP per hook	5
Max. # 9V/1BP per hook	9
For single blisters only	



Height	300 mm
Width	400 mm
Depth	195 mm
Net weight ⁽¹⁾	1.045 kg
N° of hooks	4
Hook length	16.5 cm
Max # AA/4BP per hook	12
Max # AAA/4BP per hook	15
Max # C/2BP per hook	6
Max # D/2BP per hook	5
Max. # 9V/1BP per hook	9
Max. # coin/1B per hook	36
For single blisters and wideblisters	



Height	300 mm
Width	520 mm
Depth	195 mm
Net weight ⁽¹⁾	1.594 kg
N° of hooks	5
Hook length	16.5 cm
Max # AA/4BP per hook	12
Max # AAA/4BP per hook	15
Max # C/2BP per hook	6
Max # D/2BP per hook	5
Max. # 9V/1BP per hook	9
Max. # coin/1B per hook	36
For single blisters and wideblisters	

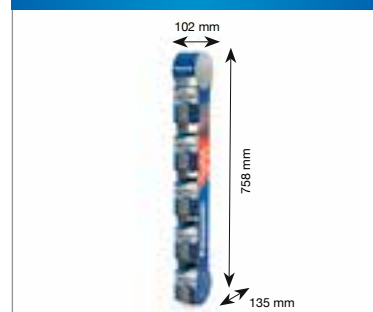
(1) Displays weight is excluding display filling.

NOTE: Display types may vary from country to country. Please contact your local representative/dealer.

SIDEHANGERS

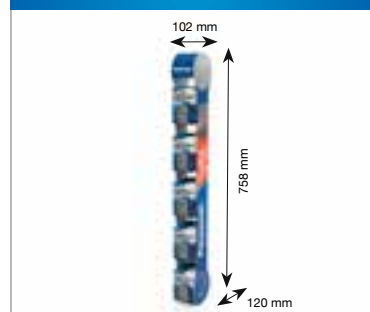
Metal permanent

5H premium magnetic strip



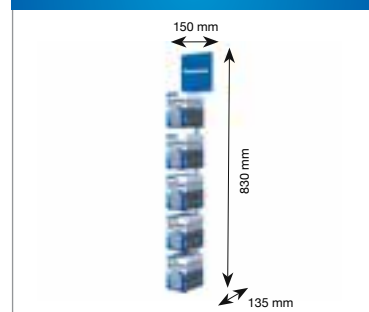
Height	758 mm
Width	102 mm
Depth	135 mm
Net weight ⁽¹⁾	1.4 kg
N° of hooks	5 fixed
Hook length	11.5 cm
Max # AA/4BP per hook	7
Max # AAA/4BP per hook	9
Max # C/2BP per hook	4
Max # D/2BP per hook	3
Max. # 9V/1BP per hook	6
For single blisters only	

5H premium strip



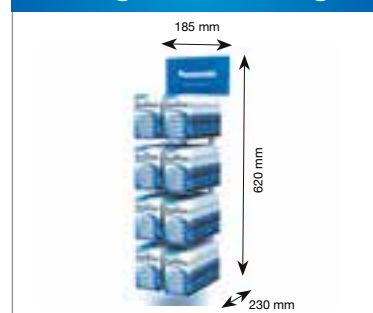
Height	758 mm
Width	102 mm
Depth	120 mm
Net weight ⁽¹⁾	1.2 kg
N° of hooks	5 fixed
Hook length	11.5 cm
Max # AA/4BP per hook	7
Max # AAA/4BP per hook	9
Max # C/2BP per hook	4
Max # D/2BP per hook	3
Max. # 9V/1BP per hook	6
For single blisters only	

5H strip



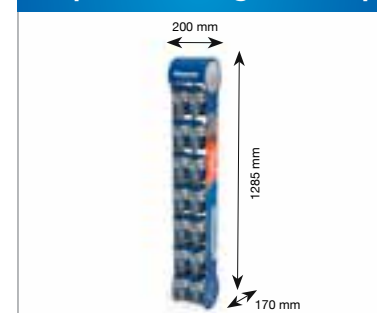
Height	830 mm
Width	150 mm
Depth	135 mm
Net weight ⁽¹⁾	0.8 kg
N° of hooks	5 fixed
Hook length	11.5 cm
Max # AA/4BP per hook	7
Max # AAA/4BP per hook	9
Max # C/2BP per hook	4
Max # D/2BP per hook	3
Max. # 9V/1BP per hook	6
For single blisters only	

8H magnetic sidehanger



Height	620 mm
Width	185 mm
Depth	230 mm
Net weight ⁽¹⁾	2 kg
N° of hooks	8 fixed
Hook length	20.5 cm
Max # AA/4BP per hook	13
Max # AAA/4BP per hook	17
Max # C/2BP per hook	8
Max # D/2BP per hook	6
Max. # 9V/1BP per hook	12
For single blisters and wideblisters	

14H premium magnetic strip



Height	1285 mm
Width	200 mm
Depth	170 mm
Net weight ⁽¹⁾	4.4 kg
N° of hooks	14 fixed
Hook length	16 cm
Max # AA/4BP per hook	9
Max # AAA/4BP per hook	12
Max # C/2BP per hook	6
Max # D/2BP per hook	5
Max. # 9V/1BP per hook	8
For single blisters and wideblisters	

FLOOR DISPLAYS

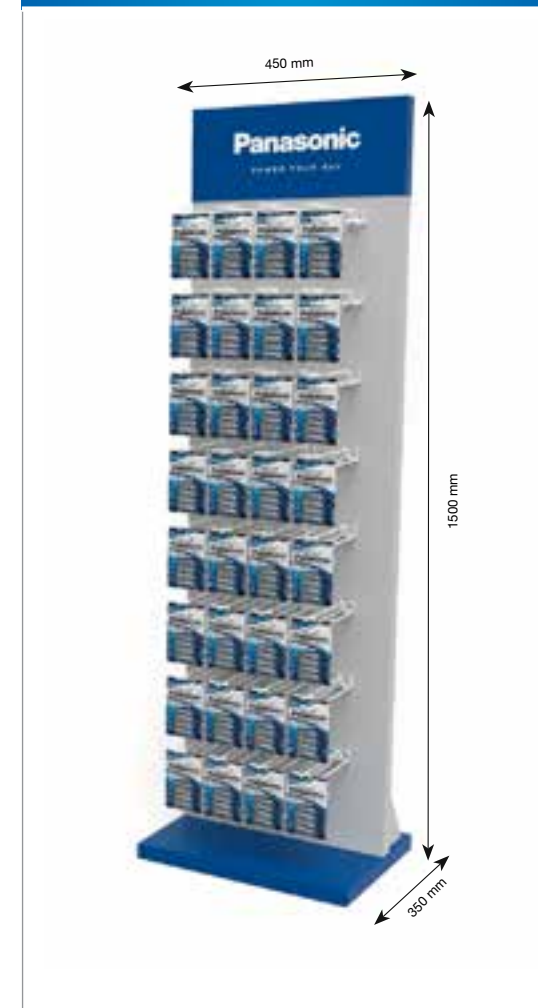
Metal permanent

28H floor display



Height	2030 mm
Width	495 mm
Depth	365 mm
Net weight ⁽¹⁾	25.5 kg
N° of hooks	28 fixed
Hook length	30 cm
Max # AA/4BP per hook	20
Max # AAA/4BP per hook	25
Max # C/2BP per hook	12
Max # D/2BP per hook	9
Max. # 9V/1BP per hook	16
For single blisters and wideblisters	

32H floor display



Height	1500 mm
Width	450 mm
Depth	350 mm
Net weight ⁽¹⁾	25.5 kg
N° of hooks	32 fixed
Hook length	16.5 cm
Max # AA/4BP per hook	12
Max # AAA/4BP per hook	15
Max # C/2BP per hook	6
Max # D/2BP per hook	5
Max. # 9V/1BP per hook	9
For single blisters and wideblisters	

(1) Displays weight is excluding display filling.

NOTE: Display types may vary from country to country. Please contact your local representative/dealer.

FLOOR DISPLAYS

Metal permanent



Height	2030 mm
Width	597 mm
Depth	365 mm
Net weight ⁽¹⁾	31 kg
N° of hooks	40 fixed
Hook length	30 cm
Max # AA/4BP per hook	20
Max # AAA/4BP per hook	25
Max # C/2BP per hook	12
Max # D/2BP per hook	9
Max. # 9V/1BP per hook	16
For single blisters and wideblisters	



Height	2069 mm
Width	600 mm
Depth	600 mm
Net weight ⁽¹⁾	65 kg
N° of hooks	128 flexi
Hook length	12.3 cm
Max # AA/4BP per hook	7
Max # AAA/4BP per hook	9
Max # C/2BP per hook	4
Max # D/2BP per hook	3
Max. # 9V/1BP per hook	6
For single blisters and wideblisters	

(1) Displays weight is excluding display filling.

NOTE: Display types may vary from country to country. Please contact your local representative/dealer.

EVOLTA

Model N°	Size	Technology	Voltage (V)	Height (mm)	Diameter (mm)	Weight (g)	Shelf life (years)	
LR03EGE	S	AAA	Alkaline	1.5	44.5	10.5	11.4	10
LR6EGE	M	AA	Alkaline	1.5	50.5	14.5	23.1	10
LR14EGE	L	C	Alkaline	1.5	50	25.7	68.7	10
LR20EGE	XL	D	Alkaline	1.5	61.5	33.6	140.9	10
6LR61EGE	9V	9V	Alkaline	9	47.5	25.25 x 16.3	43.3	5

Pro Power

Model N°	Size	Technology	Voltage (V)	Height (mm)	Diameter (mm)	Weight (g)	Shelf life (years)	
LR03PPG	S	AAA	Alkaline	1.5	44.5	10.5	11.4	10
LR6PPG	M	AA	Alkaline	1.5	50.5	14.5	23.1	10
LR14PPG	L	C	Alkaline	1.5	50	25.7	68.7	10
LR20PPG	XL	D	Alkaline	1.5	61.5	33.6	140.9	10
6LF22PPG	9V	9V	Alkaline	9	47.5	25.25 x 16.3	43.3	5
3LR12PPG	-	-	Alkaline	4.5	67	62 x 22	163	5

Everyday Power

Model N°	Size	Technology	Voltage (V)	Height (mm)	Diameter (mm)	Weight (g)	Shelf life (years)	
LR03EPS	S	AAA	Alkaline	1.5	44.5	10.5	10.8	10
LR6EPS	M	AA	Alkaline	1.5	50.5	14.5	23.1	10
LR14EPS	L	C	Alkaline	1.5	50	25.7	66.6	10
LR20EPS	XL	D	Alkaline	1.5	61.5	33.6	136.5	10
6LF22EPS	9V	9V	Alkaline	9	47.5	25.25 x 16.3	42.9	5

Alkaline Power

Model N°	Size	Technology	Voltage (V)	Height (mm)	Diameter (mm)	Weight (g)	Shelf life (years)	
LR03APB	S	AAA	Alkaline	1.5	44.5	10.5	10.8	7
LR6APB	M	AA	Alkaline	1.5	50.5	14.5	22.8	7
LR14APB	L	C	Alkaline	1.5	50	25.7	66.6	7
LR20APB	XL	D	Alkaline	1.5	61.5	33.6	136.5	7
6LF22APB	9V	9V	Alkaline	9	47.5	25.25 x 16.3	42.9	5

Red Zinc

Model N°	Size	Technology	Voltage (V)	Height (mm)	Diameter (mm)	Weight (g)	Shelf life (years)	
R03RZ	S	AAA	Zinc carbon	1.5	44	10.2	8.85	3
R6RZ	M	AA	Zinc carbon	1.5	50.25	13.9	17.5	3
R14RZ	L	C	Zinc carbon	1.5	49.4	25.4	47.7	3
R20RZ	XL	D	Zinc carbon	1.5	60.7	32.9	98.5	3
6F22RZ	9V	9V	Zinc carbon	9	48.5	17.5 x 26.5	37.9	2.5
3R12RZ	-	-	Zinc carbon	4.5	67	62 x 22	110	2.5
PP9RZ	-	-	Zinc carbon	9	78	65 x 50	368.76	2

Rechargeable Ready to Use 2450 - 900 mAh

Model N°	Size	Technology	Voltage (V)	Capacity (mAh) ⁽¹⁾	Height (mm)	Diameter (mm)	Weight (g)	
HHR-4XXE	AAA	S	Ni-MH	1.2	900	43.9	10.2	12.6
HHR-3XXE	AA	M	Ni-MH	1.2	2450	50.35	14.2	29.2

Rechargeable Ready to Use 1900 - 750 mAh

Model N°	Size	Technology	Voltage (V)	Capacity (mAh) ⁽¹⁾	Height (mm)	Diameter (mm)	Weight (g)	
HHR-4MVE	AAA	S	Ni-MH	1.2	750	44.5	10.5	13
HHR-3MVE	AA	M	Ni-MH	1.2	1900	50.5	14.5	29
HHR-2SRE	C	L	Ni-MH	1.2	2800	49.8	25.6	69.4
HHR-1SRE	D	XL	Ni-MH	1.2	2800	61.6	32.9	81.1

Rechargeable Ready to Use 1000 mAh & telephone

Model N°	Size	Technology	Voltage (V)	Capacity (mAh) ⁽¹⁾	Height (mm)	Diameter (mm)	Weight (g)	
HHR-3LVE	AA	M	Ni-MH	1.2	1000	50.5	14.5	20.35

Coin Lithium

Model N°	Technology	Voltage (V)	Capacity (mAh)	Height (mm)	Diameter (mm)	Weight (g)	Shelf life (years)
CR1025	Lithium	3	30	2.50	10.00	0.7	10
CR1216	Lithium	3	25	1.60	12.50	0.7	10
CR1220	Lithium	3	35	2.00	12.50	0.9	10
CR1616	Lithium	3	55	1.60	16.00	1.2	10
CR1620	Lithium	3	75	2.00	16.00	1.3	10
CR1632	Lithium	3	140	3.2	16.00	1.8	10
CR2012	Lithium	3	55	1.2	20.00	1.4	10
CR2016	Lithium	3	90	1.60	20.00	1.7	10
CR2025	Lithium	3	165	2.50	20.00	2.6	10
CR2032	Lithium	3	220	3.20	20.00	3.1	10
CR2354	Lithium	3	565	5.4	23.00	5.8	10
CR2430	Lithium	3	285	3.00	24.50	3.9	10
CR2450	Lithium	3	620	5.00	24.50	6.3	10

Cylindrical Lithium

Model N°	Technology	Voltage (V)	Capacity (mAh)	Height (mm)	Diameter (mm)	Weight (g)	Shelf life (years)
CR2	Photo lithium	3	850	27	15.6	11.08	10
CR123	Photo lithium	3	1400	34.5	17.1	17	10
2CR5	Photo lithium	6	1400	45	17 x 34	38	10
CRP2	Photo lithium	6	1400	36	19.5 x 34	37	10

Micro Alkaline coin

Model N°	Technology	Voltage (V)	Capacity (mAh)	Height (mm)	Diameter (mm)	Weight (g)	Shelf life (years)
LR41	Alkaline	1.5	44	3.60	4.90	0.60	3
LR44	Alkaline	1.5	120	5.10	11.50	1.95	3
LR1130	Alkaline	1.5	65	3.00	11.60	1.27	3
LRV08	Alkaline	12	52	28.50	10.30	7.92	3
LR1	Alkaline	1.5	900	30.20	12.00	9.20	5

Silver Oxide

Model N°	Technology	Voltage (V)	Capacity (mAh)	Height (mm)	Diameter (mm)	Weight (g)	Shelf life (years)
SR521	Silver Oxide	1.55	17	2.15	5.80	0.24	3
SR616	Silver Oxide	1.55	16	1.65	6.80	0.25	3
SR621	Silver Oxide	1.55	23	2.15	6.80	0.31	3
SR626	Silver Oxide	1.55	28	2.60	6.80	0.39	3
SR721	Silver Oxide	1.55	25	2.10	7.90	0.41	3
SR920	Silver Oxide	1.55	45	2.05	9.50	0.60	3
SR927	Silver Oxide	1.55	55	2.70	9.50	0.80	3
SR936	Silver Oxide	1.55	70	3.60	9.50	1.07	3
SR1130	Silver Oxide	1.55	82	3.10	11.60	1.50	3
SR41	Silver Oxide	1.55	45	3.60	7.90	0.70	3
SR44	Silver Oxide	1.55	180	5.40	11.60	2.40	3
4SR44	Silver Oxide	6.20	160	25.10	13.00	11.00	3

Zinc Air

Model N°	Technology	Voltage (V)	Capacity (mAh)	Height (mm)	Diameter (mm)	Weight (g)	Shelf life (years)
PR10 (PR230/PR536)	Zinc air	1.4	100	3.6	5.8	0.30	3
PR13 (PR48)	Zinc air	1.4	300	5.4	7.9	0.83	3
PR312 (PR41)	Zinc air	1.4	170	3.6	7.9	0.58	3
PR675 (PR44)	Zinc air	1.4	650	5.4	11.6	1.85	3

Alkaline

PANASONIC	DURACELL	ENERGIZER	VARTA	KODAK	RAYOVAC	SONY	GP	OTHERS
LR03	MN/MX2400	E92	4X03	K3A	824	AM4	24A(UP)	AAA
LR6	MN/MX1500	E91	4X06	KA	815	AM3	15A(UP)	AA
LR14	MN/MX1400	E93	4X14	KC	814	AM2	14A(UP)	C
LR20	MN/MX1300	E95	4X20	KD	813	AM1	13A(UP)	D
6LR61/6LF22	MN/MX1604	522	4X22	K9V	A1604	AM6	1604A(UP)	9V
3LR12	MN/MX1203	3LR12PL	4X12	-	-	-	-	4.5V

Zinc Carbon

PANASONIC	ENERGIZER	VARTA	KODAK	GP	MAXELL	RAYOVAC	OTHERS
R03	A91/R03	R03/2003	K3A HZ/ZM	24PL/G	R03P(AB)	3AAA	AAA
R6	A92/R6	R6/2006	KA HZ/ZM	15PL/G	R6P	5Aw	AA
R14	A93/R14	R14/2014	KC HZ/ZM	14S/G	R14P	4C	C
R20	A95/R20	R20/2020	KD HZ/ZM	13S/G	R20P	6D	D
6F22	A522/6F22	6F22/2022	K9V VZM	1604 S/G	-	D1604	9V

Rechargeable

PANASONIC	DURACELL	ENERGIZER	VARTA	PHILIPS	MEMOREX	GP	OTHERS
HHR4 (P03)	HR03	HR03	5XXX3	NCR03P	HR03	AAHC(B)	AAA
HHR3 (P6)	HR6	HR6	5XXX6	NCR6P	HR6	AAHC(B)	AA
HHR2 (P14)	HR14	HR14	56714	NCR14P	HR14	CHC(B)	C
HHR1 (P20)	HR20	HR20	23720	NCR20P	HR20	DHC(B)	D
HHR9 (P22)	HR9V	HR22	56722	6NCR22P	9V	17R8H(B)	9V

Coin Lithium

PANASONIC	DURACELL	ENERGIZER	VARTA	KODAK	OTHERS
CR1025	1025	CR1025	-	-	-
CR1216	1216	CR1216	CR1216	-	-
CR1220	1220	CR1220	CR1220	-	-
CR1616	1616	CR1616	CR1616	-	-
CR1620	1620	CR1620	CR1620	-	-
CR1632	1632	CR1632	CR1632	-	-
CR2012	-	CR2012	-	KCR2012	-
CR2016	2016	CR2016	CR2016	KCR2016	LM2016
CR2025	2025	CR2025	CR2025	KCR2025	LM2025
CR2032	2032	CR2032	CR2032	KCR2032	LM2032
CR2354	-	-	-	KCR2354	-
CR2430	2430	CR2430	CR2430	KCR2430	LM2430
CR2450	2450	CR2450	CR2450	KCR2450	-

Cylindrical Lithium

PANASONIC	DURACELL	ENERGIZER	VARTA	KODAK	RAYOVAC	IEC
CR2	CR2	CR2	CR2	KCR1	CR2	CR17355
CR123	123	E123A	CR123	K123L	123A	CR17345
2CR5	245	2CR5	2CR5	KL2CR5	2CR5	2CR5
CRP2	223	223	CRP2	KCRP2A	223A	CRP2

Micro Alkaline

PANASONIC	DURACELL	ENERGIZER	VARTA	PHILIPS	KODAK	RAYOVAC	MAXELL	SONY	IEC
LR41	-	-	-	LR41	-	-	LR41	192/LR41	LR41
LR44	LR44	A76	V13GA	A76	KA76	A76	LR44	-	LR44
LR1130	LR54	189	V10GA	-	KA54	-	-	-	-
LRV08	MN21	A23	V23GA	8LR932	K23A	KE23A	-	-	8LR932
LR1	MN9100/N	E90	4001	LR1	KN	KE810/N	LR1	AM5	LR1

Silver Oxide

PANASONIC	DURACELL	ENERGIZER	VARTA	KODAK	MAXELL	RAYOVAC	RENATA	PHILIPS	IEC
SR516	317	317	V317	-	SR516SW	317	317	317	-
SR521	379	379	V379	-	SR521SW	379	379	379	SR63
SR616	321	321	V321	-	SR616SW	321	321	321	SR65
SR621	364	364/363	V364	-	SR621SW	364	364	364	SR60
SR626	377	377	V377	-	SR626SW	377	377	377	SR66
	376	376	-	-	SR626W	376	376	376	-
SR721	362	362	V362	-	SR721SW	362	362	362	SR58
	361	361	V361	-	SR721W	361	361	361	-
SR726	397/396	397/396	V397	-	SR726SW	397	397	397	SR59
SR920	371	371	V371	-	SR920SW	371	371	371	SR69
	370	370	V370	-	SR920W	370	370	370	-
SR927	395	395	V395	-	SR927SW	395	395	395	SR57
	399	399	V399	-	SR927W	399	399	399	-
SR936	394	394/380	V394	-	SR936SW	394	394	394	SR45
SR1120	391	391	V391	-	SR1120SW	391	391	391	SR55
	381	381	V381	-	SR1120W	381	381	381	-
SR1130	390	390	V390	-	SR1130SW	390	390	390	SR54
	389	389	V389	-	SR1130W	389	389	389	-
SR41	384	384	V384	-	SR41SW	384	384	384	SR41
	392	392	V392	-	SR41W	392	392	392	-
SR44	357/303	EPX76	V76PX/357/303	KS76	SR44	357	357	357	SR44
4SR44	PX28	544	V28PX	KS28	-	RPX28	RPX28	RPX28	4SR44

Zinc Air

PANASONIC	DURACELL	ENERGIZER	VARTA	MAXELL	RAYOVAC
PR10(230)	10	10	10	-	10
PR13	13	13	13	EP13E	13
PR312	312	312	312	EP312E	312
PR675	675	675	675	EP675E	675
PR675	-	EP675E	-	675AP	-

For all batteries

Use the same battery type/technology



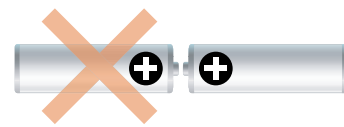
When it's time to exchange batteries, be sure to replace all of them at the same time using the same battery type. Using different types (such as a mix of alkaline and zinc batteries, mix of different companies' batteries, or a mix of new and old batteries) may not only shorten service life, but could also result in battery leakage and explosion.

Avoid rough treatment



Try to handle your batteries with care. Avoid damaging the label, and don't expose them to excessive heat. Do not disassemble, modify, or solder the battery, and don't immerse the battery in liquid. Doing so may result in short-circuit, battery rupture, leakage, and possible injury.

Avoid installing batteries in the wrong direction



If batteries are installed improperly, they can become charged. This causes gas to build up, raising the internal pressure. This could lead to potentially dangerous overheating, leakage, rupture, and possibly result in personal injury.

Don't short-circuit your batteries



If batteries are accidentally shortcircuited, excessive current is generated instantaneously resulting in overheating and possible rupture. Avoid letting your batteries come into contact with metal objects such as necklaces, car keys, or paperclips.

What to do in case of leakage



If a battery leaks due to accidental misuse, and electrolyte (battery fluid) comes into contact with your eyes, rinse them well with water and seek medical treatment immediately. If the electrolyte comes in contact with skin or clothing, rinse the exposed area thoroughly with water.

Lithium battery storage safety tips



- Keep all batteries in a sealed container in a high cupboard.
- Keep products well out of reach if the battery compartment isn't secured.
- Put 'flat' or 'dead' batteries out of reach straight away and recycle safely.

WE RECOMMEND TO KEEP BATTERIES OUT OF CHILDRENS' REACH.

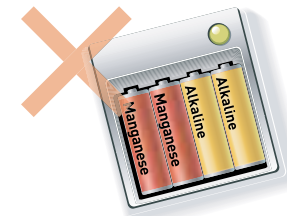
If you suspect your child has swallowed a lithium battery, act this:

- Take your child straight to hospital.
- Do not let your child eat or drink.
- Do not induce vomiting.



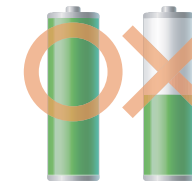
For Ni-MH rechargeable batteries

Never charge primary batteries



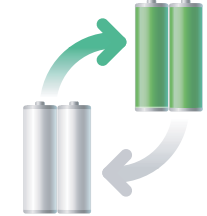
Charging primary batteries is highly dangerous and may result in injury. Recharge only Ni-MH batteries in an approved charging device. If Ni-MH batteries are charged with a device not specifically designed for that product, the battery may overheat, rupture, and leak.

Recharge Ni-MH batteries when fully depleted



It is best to recharge your Ni-MH batteries after they have been fully discharged. Doing so may provide longer usage and prolong the life of the product. When recharging is complete, it's also a good idea to remove the batteries from the charger as soon as possible. Remove the charger from the electrical outlet when batteries are replenished.

Replace all batteries at the same time



Mixing batteries at different states of depletion in your device can result in battery-fluid leakage and potential injury. When using rechargeable batteries, we recommend installing cells that were recharged at the same time.

Tips for enjoying better performance

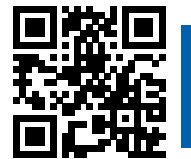
Switch off your device after use

Remove batteries from devices not in use for long periods

Carry a spare set of batteries

**Tips for safe storage
10 °C to 25 °C
(50 °F to 77 °F)**

Also check the Frequently Asked Questions section on our Panasonic website for more info:
www.panasonic-batteries.com/faq



Online communication



www.panasonic-batteries.com

- **Responsive design**
(desktop + tablet + smartphones)
- Monthly **blog posts**
- Frequently asked questions

www.facebook.com/Panasonic.Batteries.Europe

Follow us on Facebook to stay up to date about our products, our campaigns, fun facts and much more!



partner.advanced-power-solutions.com

We have created a **PARTNER PORTAL** where you – our partners – can find everything you need to know about our products:

- product visuals
- sales folders
- technical data
- logos
- advertisements
- lifestyle visuals
- movies
- etc.

Ask your local sales contact for more info!



EVERYTHING IN
1 PLACE

www.panasonic-batteries.com

Copyright© Advanced Power Solutions NV (2021) - All rights reserved.

All product information contained in this brochure is for information purposes only. Since product specifications/availability may differ from country to country, the information contained herein should not be used or relied upon as a substitute for information that is available to you from our local dealers. The information contained herein is designed to be as comprehensive as possible. Advanced Power Solutions NV reserves the right, however, to make changes at any time, without notice, to models, equipment, specifications and availability. 05/2021. Promoter: Advanced Power Solutions NV, M. Grohmann, Brusselsesteenweg 502, 1731 Zellik, Belgium.

Panasonic